



The Polychrome Development Framework

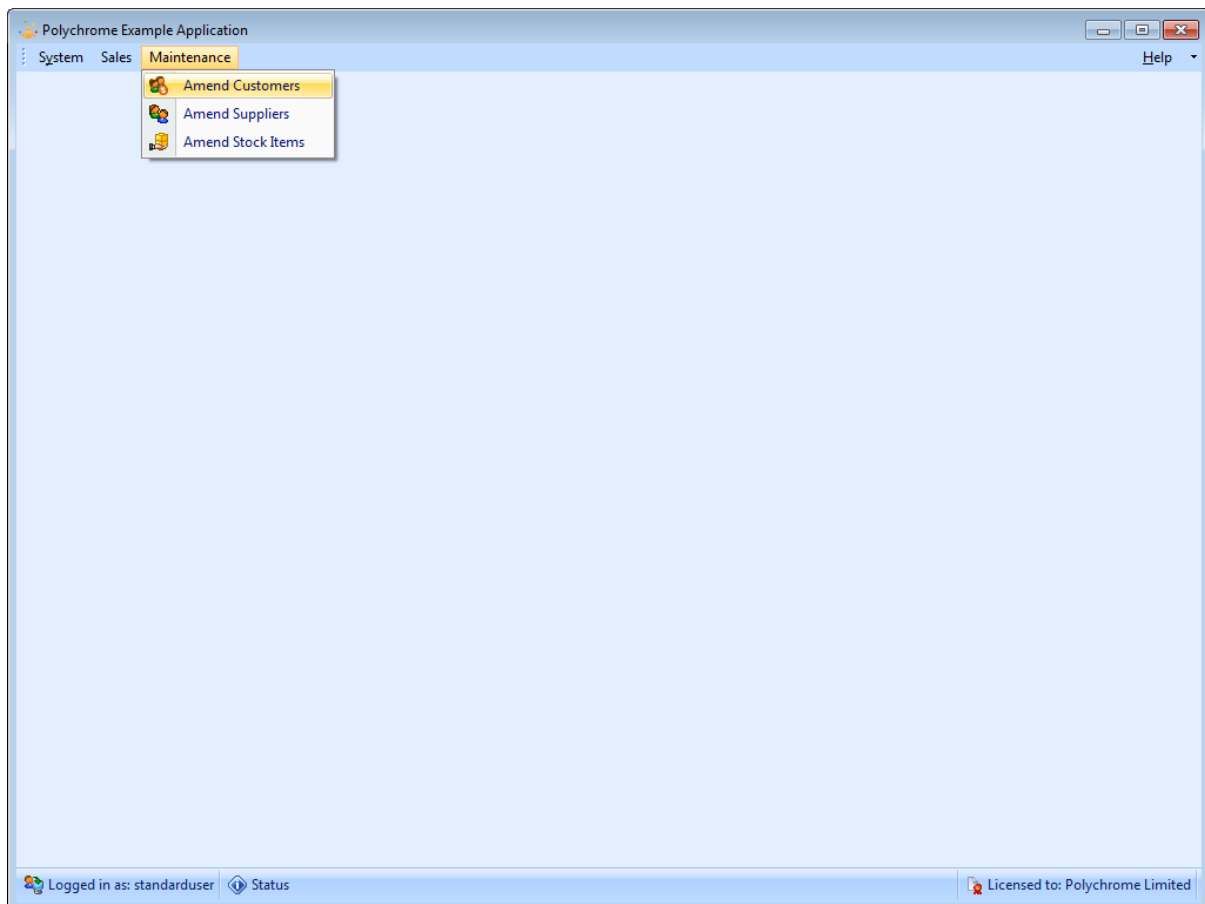
The Polychrome development framework dramatically reduces the amount of time required to develop a user interface. The intellectual property of this framework remains with Polychrome but as a part of your system, it will ensure consistency across screens. It helps by reducing the amount of code which means less testing and less to go wrong.

Here you can see some details of a typical system and what the user sees on a day to day basis.

User interface

Most modern Windows applications use drop down menus that can show or hide functions based on the user's rights.

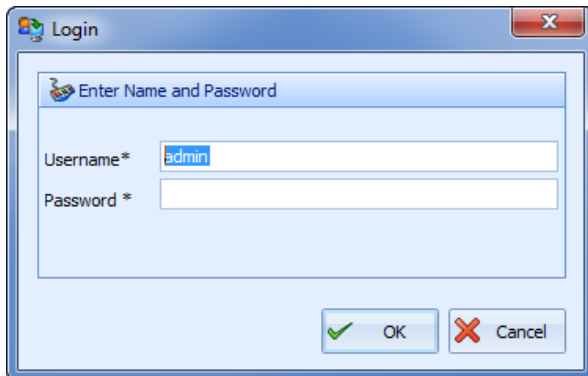
Menus



A consistent user experience reduces learning time and makes the system easier to use, and this generally translates to users making less mistakes.

Login

Each user will login to the system on start up (example screen shown below). Based on what user group they belong to, the various menu items will be shown or removed.



Attached to every system is a license file system. If you are developing a project that you plan to resell then we can also supply tools to assist with the creation and management of licenses.

When a user logs in the license is checked and the license can add additional control over what functions and features are available within the software. For example, you could have a standard, professional and enterprise edition of the software with increasing levels of functionality.

Help system

All Polychrome systems come with a full windows help file that provides context sensitive help, allowing the user to get help on the task they are working on by simply pressing F1 as is standard in Windows applications.

Help Navigation: System > Finding Data

To find something press Ctrl + F or click the Find Icon

To select an item from the find grid you simply scroll to the item you want and click on the line contains the item you want. Then click the OK button, you will be returned to the screen you were using and you will now be on the record that you choose from the grid.

Find a Standard Operating Procedure

Doc ID	Heading	Category	Name	Status	Next Review	Review By	Next To Do	To Do By
1	Tasks	Dispensary	dispensary errors	Current	13/01/2010	Pharmacist	16/01/2011	Heather Cutfield
2	Documentation	Documentation	Standard Operating Procedure (SOP) writing	Current	13/01/2011	Propagator		
30	Dispensary Procedures	Dispensary	Dispensary Cleaning	Current	13/01/2011	Pharmacist		
51	Dispensary Procedures	Dispensing	Compounding of Medicines	Current	16/11/2008	Pharmacist		
52	Dispensary Procedures	Dispensing	Repacking & Labelling of Compounded Medicines	Current	16/11/2008	Pharmacist		
53	Dispensary Procedures	Dispensing	Dispensing a Prescription - Steps	Current	16/11/2008	Pharmacist		
54	Dispensary Procedures	Dispensing	Checking a Prescription	Current	16/11/2008	Pharmacist		
55	Dispensary Procedures	Dispensary	Dispensary Rubbish Removal	Current	16/11/2008	Pharmacy Technician		
56	Dispensary Procedures	Dispensary	Validation of Accuracy of Scales	Current	16/09/2008	Pharmacist		
57	Dispensary Procedures	Dispensary	Recalls	Current	16/11/2008	Pharmacy Technician		
58	Dispensary Procedures	Dispensary	Purchase and Storage of Starting Materials	Current	11/12/2009	Pharmacist		
59	Dispensary Procedures	Dispensary	Handing out Prescriptions & Counselling	Current	26/05/2008	Pharmacist		
60	Dispensary Procedures	Dispensing	Interventions	Current	15/11/2008	Pharmacist		
61	Dispensary Procedures	Dispensing	Counselling - Prescriptions	Current	16/09/2008	Pharmacist		
62	Dispensary Procedures	Dispensing	Medicine	Current	23/07/2009	Pharmacist		
63	Dispensary Procedures	Dispensing	Unit Dose dispensing	Current	13/09/2008	Pharmacist		
64	Dispensary Procedures	Dispensing	Fixed Telephoned Prescriptions	Current	16/11/2008	Pharmacy Technician		
65	Pharmaceutical Serv...	Customer Se...	Communication Techniques	Current	11/09/2008	Pharmacy Technician		
66	Pharmaceutical Serv...	Pharmacy Pa...	Diagnosing & Treating common Medical Condi...	Current	17/11/2008	Pharmacist		

Filtering Data

The Find Screen has some very useful features to help you find data more easily. The Filter bar can be found above the grid and below the column headings. To filter data, just enter some selections in the filter bar like this...

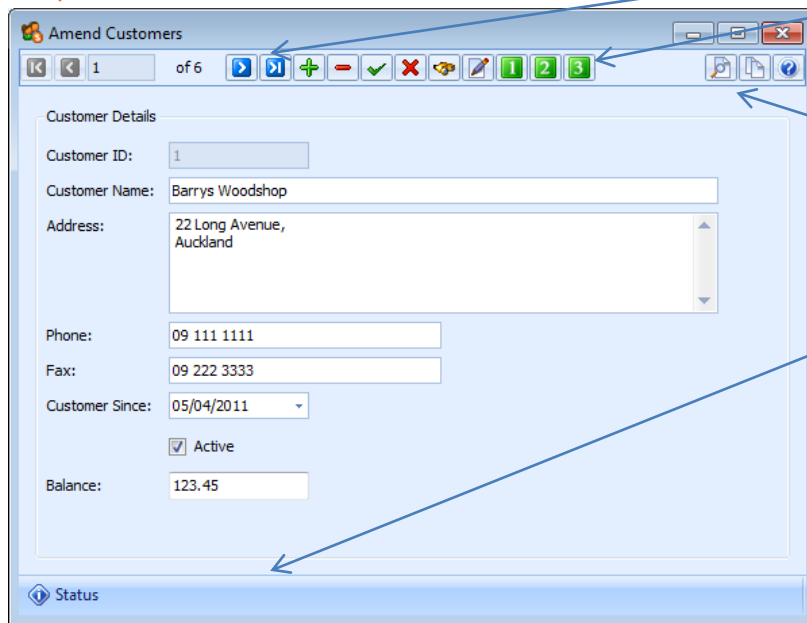
Find a Standard Operating Procedure

Doc ID	Heading	Category	Name	Status	Next Review	Review By	Next To Do	To Do By
51	Dispensary Procedures	Dispensing	Compounding of Medicines	Current	16/11/2008	Pharmacist		
52	Dispensary Procedures	Dispensing	Repacking & Labelling of Compounded Medicines	Current	16/11/2008	Pharmacist		
53	Dispensary Procedures	Dispensing	Dispensing a Prescription - Steps	Current	16/11/2008	Pharmacist		
54	Dispensary Procedures	Dispensing	Checking a Prescription	Current	16/11/2008	Pharmacist		

Reporting

The reporting system used with the Polychrome development framework is extremely powerful and allows reports to be previewed prior to printing as well as exporting to Excel, PDF and a selection of other popular formats.

Entry Screens



Navigation bar with consistent look on all screens.

Additional buttons for custom actions can easily be added for process specific actions like print/preview a report or set a reminder.

Screen related reports menus

Status panel with consistent look on all screens.

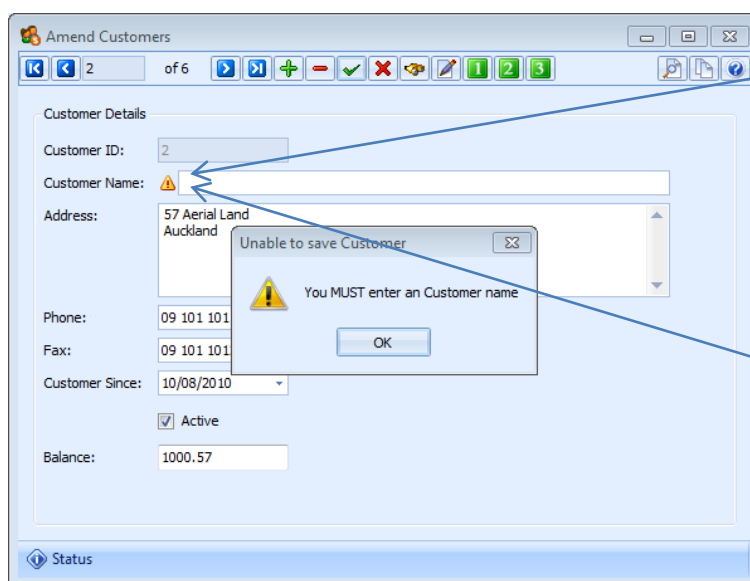
Additional buttons for custom actions can easily be added along with progress indicators. Feedback adds confidence to users, for example, when a record is saved a simple message displays that the record saved and then disappears after a few seconds.

This is a standard maintenance screen with a standard navigation bar at the top and feedback panel at the bottom. The buttons have consistent behaviour across all maintenance screens and keyboard shortcuts.

Consistency of look and feel engenders confidence and users can quickly understand new screens. They know that pressing F4 or clicking on the Plus icon will add a new record without learning each new screen from scratch.

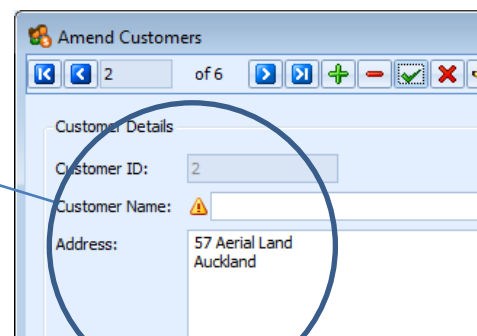
Validation of data

Data validity will always be a key concern. Validation should occur at both field and screen level, so when a mandatory field is skipped an icon is displayed next to the problem and when saving the record any issues are displayed in a message box.



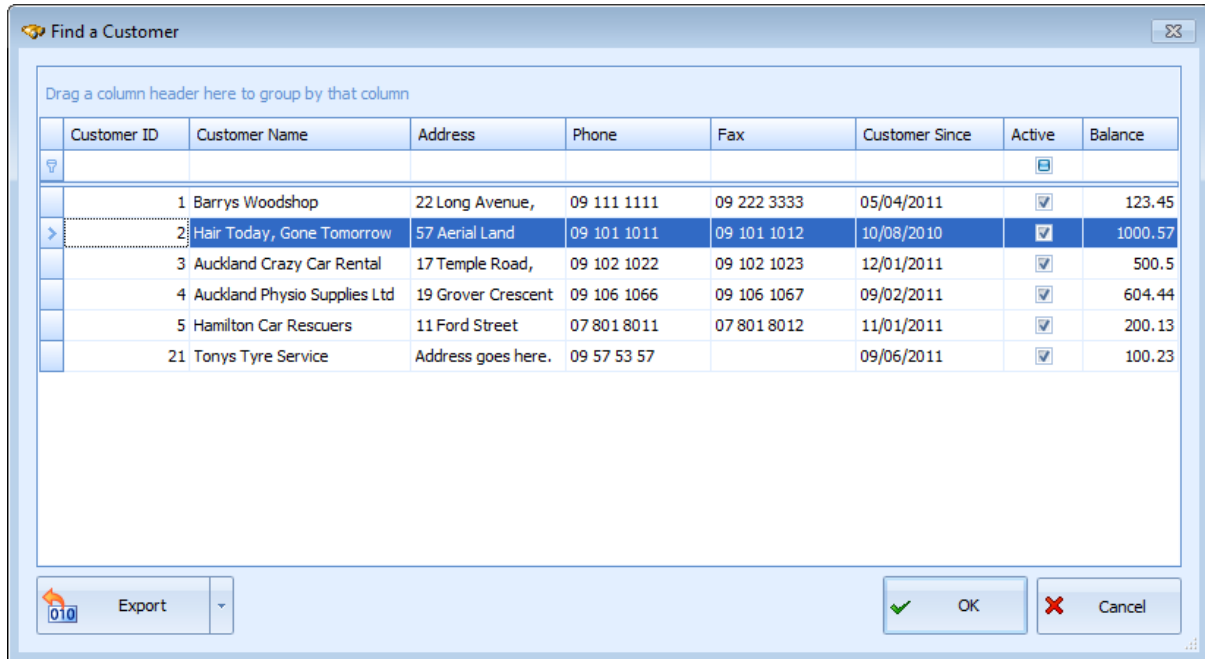
Instant validation feedback.

Mandatory fields alert the user as they proceed through the screen Simple place the mouse over the warning for assistance.

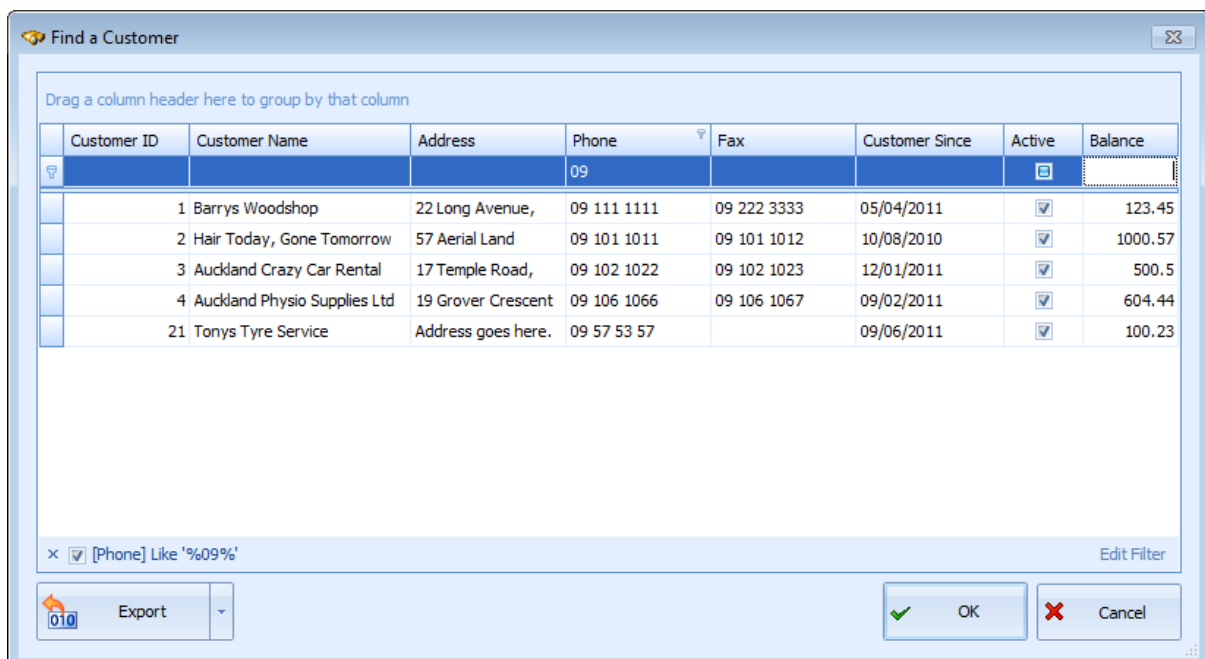


Finding Information

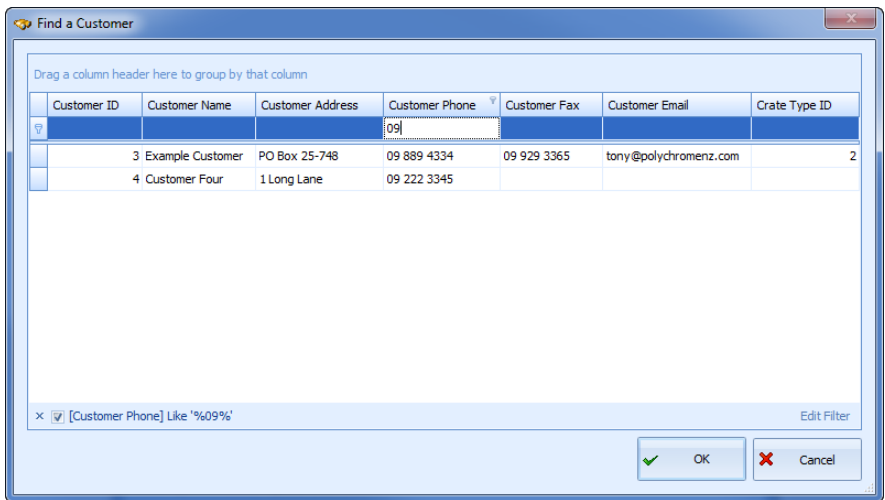
A consistent interface for finding information would be introduced in line with the Polychrome standard development framework. The ability to easily find data is just one way to make staff more productive.



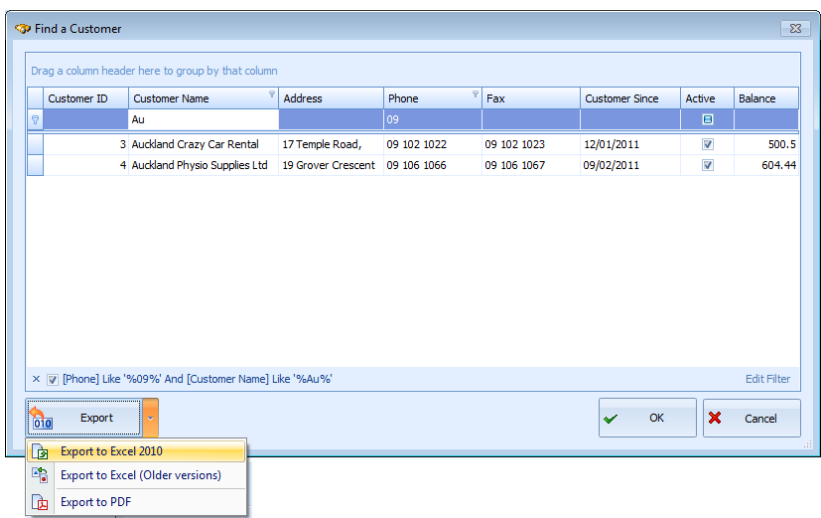
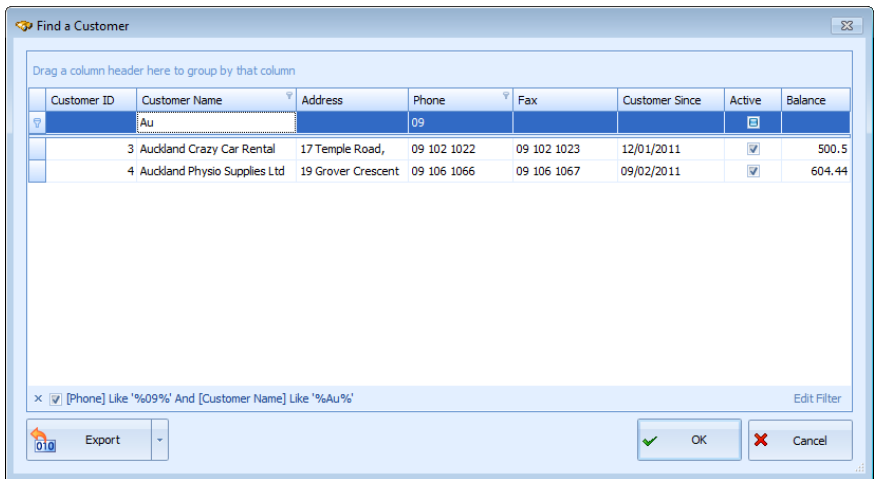
This find screen allows the user to filter and sort data making it easy to find one record in a large dataset.



Here you can see that by typing 09 in the customer phone filter, we now only see those customers where the phone number starts with 09.



The next step is to type “Au” in the customer name filter and we only have two matches. You may use any combination and the search text can be part of the field. For example you could type “land” and it would still find customers with “Auckland...”



Finally there is an optional export button that allows you to export the results to Excel for quick and easy analysis.

Maintenance

The Polychrome Development Framework is a constantly changing and evolving eco system. Work that is done for other Polychrome clients adds new features that you will benefit from over time.

General Comments

Typically we would develop a document called a “Functional Decomposition” which is a fancy term for a features list. Each screen and each process is listed and then these tasks are described at a high level. This document evolves throughout the life of the project and will help form the content of the help file. Comments are added by the interested parties. As the work is done this information is updated so that progress can be tracked.

Application protection

The new application would be developed using Microsoft Visual Basic Dot Net and then protected to prevent code reverse engineering. This will help protect your IP should you later choose to sell the software to other companies.

Polychrome uses a software license mechanism. We reserve the right to disable features in the software in the case of failure to pay for the software though we have never needed to do this yet.

System Requirements

We develop in Microsoft Dot Net and the typical system requirements are

Server

- Windows Server
- Microsoft SQL Server 2008 Express or greater
- Suitable storage space

Workstations / remote users

- Windows XP or better (prefer Windows 7)
- 1024Mb RAM or better (the more the better)
- Microsoft SQL Server 2008 (standalone applications)
- Adequate storage space initially 10-20Mb but differs based on amount of data entered.

Experience has shown that a modern PC not more than two years old preferably running Windows7 provides the best user experience.